

# MARINER NARROWBEAM G1



DATASHEET

LED IP66 IK10 CLASS 1 CE UK CA

## Product information

Tungsr Mariner NarrowBeam G1 combines a classical, traditional design with modern technology. This product is an ideal choice for industrial indoor and outdoor roofed spaces, warehouses, sports areas, workshops, garages, transport terminals and utility structures, where robust structure, easy and flexible installation, high luminous flux combined with high efficiency is required. The range is suitable for most location when linear lighting is needed, due to its high ingress protection (IP66) and high impact protection level (IK10).

## Key features

- Power: 31W / 39W / 44W / 56W
- Control: Static
- Efficiency: Up to 126lm/w
- Luminous flux: up to 6950m
- CCT: 4000K
- Lifetime: 50.000 hours @ L80B10
- 5 - Year Warranty
- IP66/IP69
- IK10
- Through-wiring function
- Operating temperature between -25°C and +45°C

## Application areas



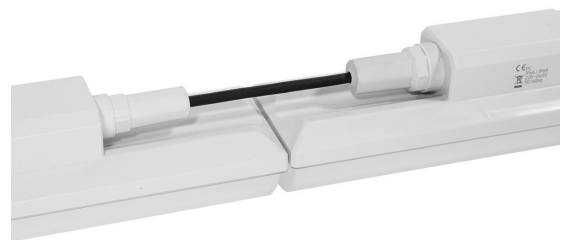
Factories



Warehouse



Garage



# Specification summary

Parameters below are the same for all luminaires in the range:

Light Technology used	LED
Light source	Non-replaceable light source
Mains / Non-mains	Mains Light source
Directional / Non-directional	Non-directional
Colour-tuneable	No
Anti-glare shield	No
Correlated color temperature (CCT)	4000K
Color rendering index min. (CRI)	80
R9 colour rendering index value	0
SDCM (Standard Deviation or Color Maintenance)	max. 6
Beam angle	C0-C180 - 79° ; C90-C270 - 118°
Flicker metric	≤1
Stroboscopic effect metric	≤0.4

Input Voltage & Frequency	220-240VAC, 50/60Hz
Power factor	≥0.9
Displacement factor	≥0.9
Standby power	0W
Lifetime (L80B10)	50.000h
Survival factor at 3000h	1
Lumen maintenance at 3000h	99%
Ingress protection (IP)	IP66/IP69
Impact protection (IK)	IK10
Color of Housing	Gray (RAL7035)
Materials (housing)	PC

Parameters below are specific for each of the product codes:

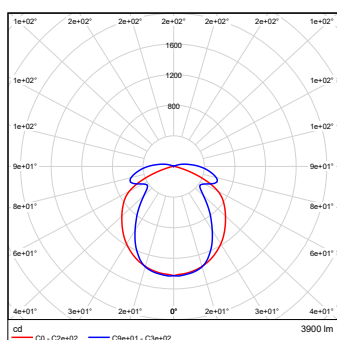
Product code	Description	ELECTRICAL DATA			PHOTOMETRICAL DATA			DIMENSIONS & WEIGHTS	
		Luminaire power (W)	Input current (mA)	Dimmable	Luminaire lumen (lm)	Light source Useful lumen (360°) (lm)	Luminaire Efficiency (lm/W)	Dimensions (LxWxH) (mm)	Product weight (kg)
<b>STATIC RANGE</b>									
93121087	Mariner NarrowBeam G1 4' 31W 840 S	31	130	No (Static)	3900	3900	126	1175x90x93	1,5
93121088	Mariner NarrowBeam G1 4' 44W 840 S	44	187	No (Static)	5250	5250	119	1175x90x93	1,5
93121089	Mariner NarrowBeam G1 5' 39W 840 S	39	161	No (Static)	4800	4800	123	1455x90x93	1,8
93121090	Mariner NarrowBeam G1 5' 56W 840 S	56	235	No (Static)	6950	6950	124	1455x90x93	1,8

## Energy efficiency class (A-G)\*

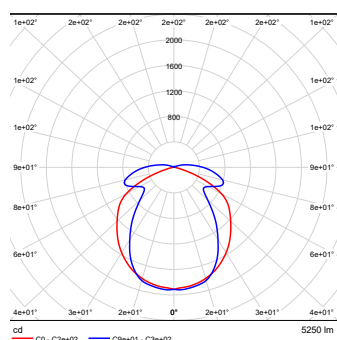


\*according to regulation 2019/2015

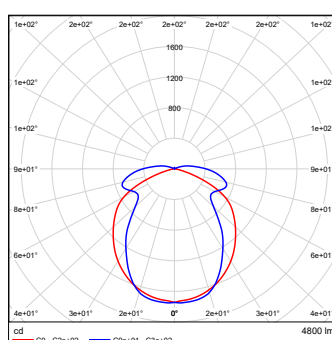
## Photometrical data



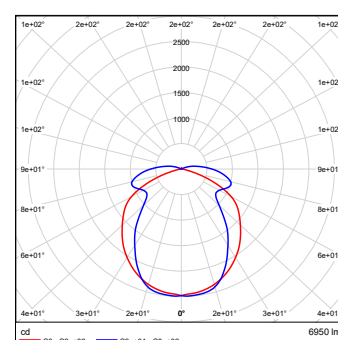
Mariner NarrowBeam G1 4ft 31W



Mariner NarrowBeam G1 4ft 44W

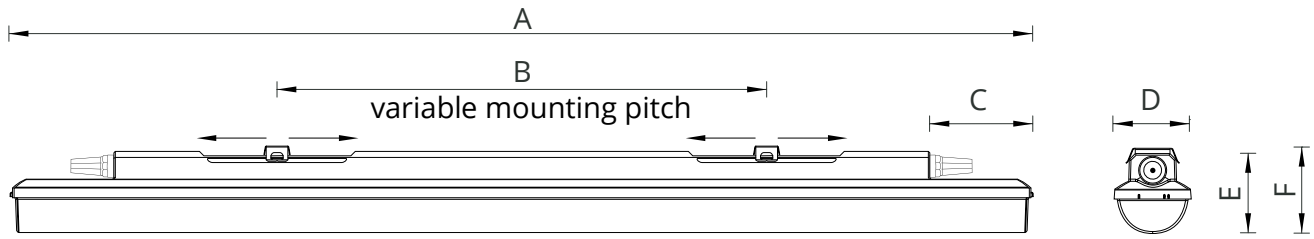


Mariner NarrowBeam G1 5ft 39W



Mariner NarrowBeam G1 5ft 56W

## Dimensions (mm)



Type	A (mm)	B (mm)	C (mm)	D (mm)	E (mm)	E (mm)	Weight (kg)
Mariner NarrowBeam G1 4' xxx	1175	420 - 700	118	90	93	106	1,5
Mariner NarrowBeam G1 5' xxx	1455	700 - 980	118	90	93	106	1,8

## Ordering information

Internal Code	Range	Generation	Length	Wattage	CRI	CCT	Control
Mariner	NarrowBeam	G1 - Generation 1	4' - 4ft 5' - 5ft	31W 39W 44W 56W	8 - CRI 80	40 - 4000K	S - Static