

LED Batten G2



LED IP20 CLASS II CE UK CA

Product information

The LED Batten G2 designed to be a direct replacement for conventional battens, now with even higher efficiency. It offers multiple installation methods to ease your worries and bring the customer a brand new experience of soft lighting. The luminaire is fitted with an on/off switch for individual operation. The best choice for smooth linear lighting. We offer this range of 6 luminaires in 3 wattages.

Features

- Power: 8W, 12W and 16W versions
- Luminous flux: from 960 to 1920 lm
- Ambient temperature: -20°C to +40°C
- Long life: lifetime 50 000hrs @L70
- High color rendering: CRI>80
- High efficiency: up to 120lm/w
- Beam angle: 150°
- Class: II
- IP20
- IK03
- Seamless connection for a longer installation.

Application areas



Office



Retail



Hospitality



Indoor and cove

- Corridors and entrances
 - Basements
 - Stairwells
 - Shelves
 - Under-cabinet lighting
- Direct replacement for luminaires with fluorescent lamps.

Specification summary

Parameters below are the same for all luminaires in the range:

Light Technology used	LED
Light source	Non-removable light source
Mains / Non-mains	Mains light source
Directional / Non-directional	Non-directional
Colour-tuneable	No
Anti-glare shield	No
Correlated color temperature (CCT)	3000K - 4000K - 6500K
Colour rendering index (CRI) (Ra) min	80
R9 colour rendering index value	0
SDCM (Standard Deviation or Color Maintenance)	≤6
Beam angle	150°
Flicker metric	<1
Stroboscopic effect metric	<0.4

Input Voltage & Frequency	220-240V(AC), 50/60Hz
Power factor	8W - ≥0.5 12W/16W - ≥0.7
Displacement factor	8W - ≥0.5 12W/16W - ≥0.7
Lifetime (L70B50)	50000
Survival factor at 3000h	1
Lumen maintenance at 3000h	0.96
Ingress protection (IP)	IP20
Protection Class	Class II
Color of Housing (RAL)	White
Materials (housing)	PC

Parameters below are specific for each of the product codes:

Product code	Description	ELECTRICAL DATA				PHOTOMETRICAL DATA				DIMENSIONS & WEIGHTS		
		Luminaire power (W)	Light source On-mode power (W)	Lightsource input voltage (V (DC))	Light source input current (mA)	Dimmable	Luminaire lumen (lm)	Light source Useful lumen (360°) (lm)	Luminaire Efficiency (lm/W)	UGR	Dimensions (LxWxH) (mm)	Product weight (kg)
STATIC RANGE												
93120933	LED Batten G2 TU IP20 8W 2ft 830 S	8	8	220-240	38	No (Static)	960	960	120	n/a	602x24x35	0,115
93120934	LED Batten G2 TU IP20 8W 2ft 840 S	8	8	220-240	38	No (Static)	960	960	120	n/a	602x24x35	0,115
93120916	LED Batten G2 TU IP20 8W 2ft 840 S DS	8	8	220-240	38	No (Static)	960	960	120	n/a	602x24x35	0,115
93120917	LED Batten G2 TU IP20 8W 2ft 865 S DS	8	8	220-240	38	No (Static)	960	960	120	n/a	602x24x35	0,115
93120935	LED Batten G2 TU IP20 12W 3ft 830 S	12	12	220-240	53	No (Static)	1440	1440	120	n/a	902x24x35	0,160
93120936	LED Batten G2 TU IP20 12W 3ft 840 S	12	12	220-240	53	No (Static)	1440	1440	120	n/a	902x24x35	0,160
93120918	LED Batten G2 TU IP20 12W 3ft 840 S DS	12	12	220-240	53	No (Static)	1440	1440	120	n/a	902x24x35	0,160
93120919	LED Batten G2 TU IP20 12W 3ft 865 S DS	12	12	220-240	53	No (Static)	1440	1440	120	n/a	902x24x35	0,160
93120937	LED Batten G2 TU IP20 16W 4ft 830 S	16	16	220-240	73	No (Static)	1920	1920	120	n/a	1184x24x35	0,200
93120938	LED Batten G2 TU IP20 16W 4ft 840 S	16	16	220-240	73	No (Static)	1920	1920	120	n/a	1184x24x35	0,200
93120920	LED Batten G2 TU IP20 16W 4ft 840 S DS	16	16	220-240	73	No (Static)	1920	1920	120	n/a	1184x24x35	0,200
93120921	LED Batten G2 TU IP20 16W 4ft 865 S DS	16	16	220-240	73	No (Static)	1920	1920	120	n/a	1184x24x35	0,200

Accessories

93107516	Connecting cable(wire 200mm)
93108089	Power cable 1m with EU plug
93107515	Power cord without plug

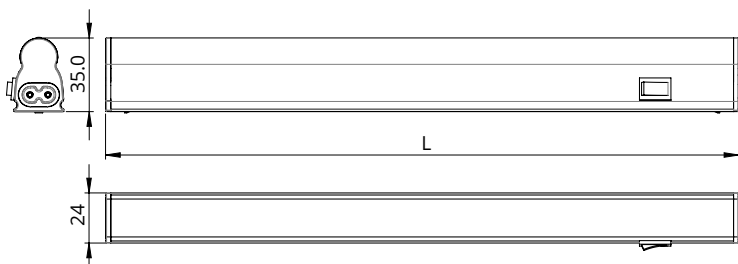
Energy efficiency class (A-G)*



Order logic

Internal Code	Generation	Brand	IP rating	Wattage	Size	CRI	CCT	Control	Shipment
LED Batten	G2 - Generation 2	TU - Tungsram	IP20	8W 12W 16W	2ft 3ft 4ft	8 - 80 CRI	30 - 3000K 40 - 4000K 65 - 6500K	S - Static	DS - Direct Shipment

Dimensions (mm)



Accessory

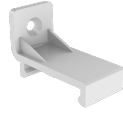
Bellow accessories are included in the packaging.



Connector



Silicone
plug



Wall
installation



Bracket

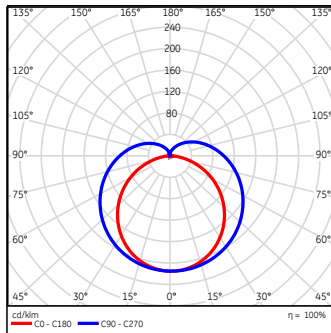


Screw
Rubber

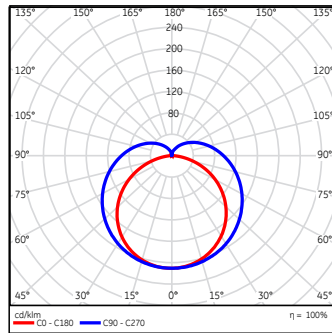


Tapping
screws

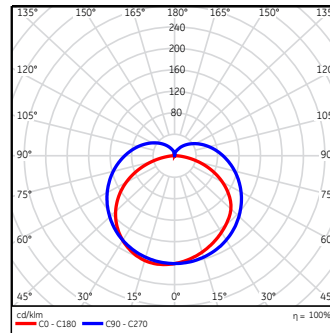
Photometric data



8W



12W



16W

Only for indicative purpose. For lighting design, please use the ldt photometry files available for the products.

Regulatory and standards

Regulatory mark: CE, UKCA, Morocco

Regulations: 2014/35/EU, 2014/30/EU, 2011/65/EU, (framework 2009/125/EC) EU 2019/2020, (framework EU/2017/1369) EU 2019/2015*

Harmonized standards: EN 60598, EN 62493, EN 61547, EN55015, EN 61000, look for CE Declaration of Conformity and Technical File for details

Photobiological risk assessment is maximum group 1. The product is considered safe, does not pose any photobiological hazard
*not on DOC